

# BOURGEOIS

Matteo Thun & Antonio Rodriguez



300 x 140



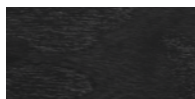
300 x 110



ø160



Noce canaletto  
Canaletto walnut



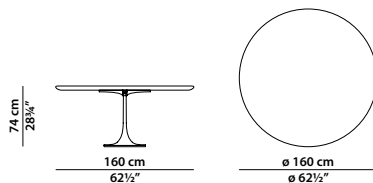
Frassino grigio antracite  
Charcoal-grey ash

Base in fusione di ghisa sabbiata. Piano in massello di noce canaletto tinto scuro e finito con oli naturali o in frassino tinto grigio antracite scuro e finito con oli naturali.

Base in sandblasted cast iron. Dark stained and natural-oil finished solid canaletto walnut top or dark charcoal-grey stained and natural-oil finished ash top.

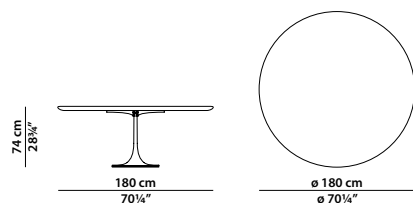
ø160 h74 | 1,70 m<sup>3</sup>

Tavolo. Table.



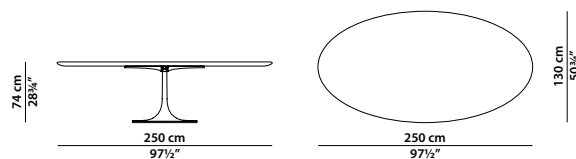
ø180 h74 | 1,80 m<sup>3</sup>

Tavolo. Table.



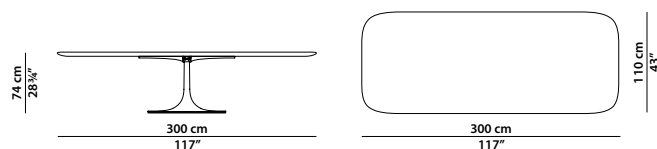
250 x 130 h74 | 1,80 m<sup>3</sup>

Tavolo. Table.



300 x 110 h74 | 1,90 m<sup>3</sup>

Tavolo. Table.



300 x 140 h74 | 1,90 m<sup>3</sup>

Tavolo. Table.

